

Please make sure that you print this resource at 100% so that all measurements are correct.

To do this, follow the relevant steps below.

Adobe Reader or Adobe Acrobat

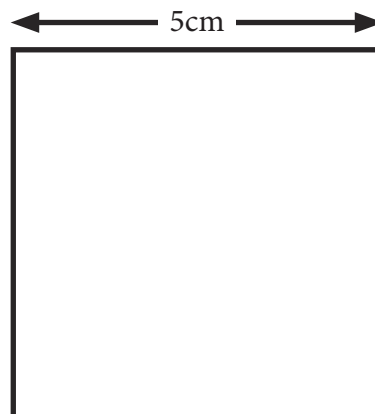
- Adobe Reader is a free PDF viewer, from Adobe. To install a copy of Adobe Reader, go to <https://get.adobe.com/uk/reader/>.
- Once Adobe Reader is installed, open your PDF.
- Go to File>Print.
- Under 'Page Sizing & Handling', select 'Size'.
- From here, make sure that 'Actual Size' is selected.
- Print this page as a test, making sure that the shape below is the correct size once printed.
- If the test print is correct, print your PDF.

Foxit Reader

- Go to File>Print.
- Set the 'Scaling' to 'None'.
- Print this page as a test, making sure that the shape below is the correct size once printed.
- If the test print is correct, print your PDF.

Web Browser

- If printing from a web browser, such as Chrome, Firefox or Microsoft Edge make sure that your printer is set to print at 100%, either by unticking 'Fit to Page' or selecting 'Actual Size'.
- Print this page as a test, making sure that the shape below is the correct size once printed.
- If the test print is correct, print your PDF.



Notes for Teachers:

Differentiation for Maths Mystery Games

The Maths Mystery Games are meant to be a fun way to work on different maths skills whilst using them in real-life situations with the added bonus of catching a criminal and solving a crime!

The games can be done clue by clue over a number of days/lessons or as a whole lesson at the end of a week or unit.

The games are meant to bring a class together and in preparation for SATs tests all children work on the same game. However, differentiation can be done in a number of ways:

- Buddying up HA/LA and other mixed ability children encouraging them to work as a team listening to everyone and HA children taking on mentoring roles. HA could even be team leaders in groups also responsible for making sure everyone is included.
- **Letting children use the UKS2 Maths hint Revision Cards to work with during the game.**
- Having some children work with an adult.
- Letting some children use calculators.
- Working together as a class and giving different children or table groups different parts to work on and pooling ideas and working through it together.
- There are also LKS2 maths mystery games available if you prefer lower differentiation bearing in mind that the subject matter and clues will not be the same.
- Starters: There will also be your own reminders of work you have done in class with maybe a reminder on the board of specific areas such as making common denominators or a mental starter that recaps on certain skills.

Note: Please print at 100% in order for clue 5 to work!

The Mystery of the Panto Purloiner

It is the end of the final panto show before the two-day Christmas break for the cast and crew of Cinderella at the Theatre Royal in Panto Town.

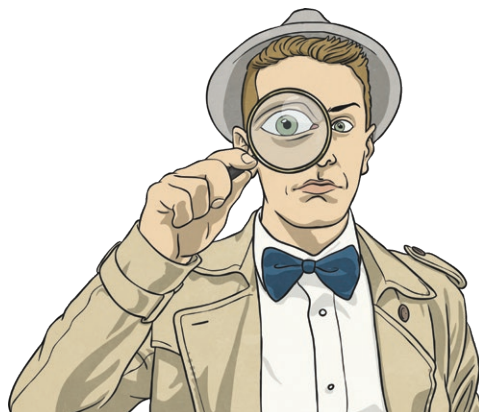
Everyone was enjoying the Christmas show party, when the director Winnie Wheelberg screeched in disgust and shock, as she proclaimed that all the Secret Santa presents for the actors had been stolen!

You are the chief detective in charge of the case and with the help of your Scene of Crime Officers (SOCOs), you have only half a day to find the culprit so everyone can get their presents back in time for Christmas.

The only people with access to the area were the actors during the panto. Solve the following clues to find out the identity of the perpetrator based on their part in the panto, acting skill, shoe size, amount of time on stage and the Secret Santa present that they bought.



Good Luck... the cast and crew of the Panto Town panto are relying on you!



| Name | Part | Acting Skill | Shoe Size | Time on Stage | Type of Present Bought |
|-------------------|-----------------|--------------|-----------|--------------------|------------------------|
| Annie Advent | Dancer | Amateur | 5 | 1 hour | Toiletries |
| Abdul Angel | Ensemble | Semi-Pro | 7 | 55 mins | Chocolate |
| Bob Bauble | Ugly Sister | Professional | 8 | 1h 5mins | Book |
| Bonnie Boxing-Day | Ensemble | Semi-Pro | 10 | 55 mins | Funny |
| Colleen Crackers | Cinderella | Professional | 6 | 1h 40mins | Ornament |
| Chris Chringle | Ensemble | Amateur | 9 | 55 mins | Toiletries |
| Dec December | Buttons | Semi-Pro | 5 | 70 mins | Book |
| Disa Dinner | Dancer | Professional | 7 | 1 hour | Funny |
| Elvis Elf | Prince Charming | Professional | 10 | 45 mins | Chocolate |
| Eve Egnog | Cook | Semi-Pro | 5 | 40 mins | Chocolate |
| Farah Fairy | Dancer | Amateur | 8 | 1 hour | Funny |
| Frederik Festive | The King | Semi-Pro | 10 | $\frac{1}{2}$ hour | Toiletries |
| Goldie Gold-Rings | Ensemble | Amateur | 5 | 55 mins | Funny |
| Gordon Goose | Ensemble | Semi-Pro | 7 | 55 mins | Book |
| Holly Holidays | Dancer | Professional | 6 | 1 hour | Chocolate |
| Harry Holly-Berry | Footman | Amateur | 9 | 45 mins | Toiletries |
| Ivan Ivy | Ensemble | Semi-Pro | 8 | 55 mins | Funny |
| Isa Icicle | Dandini | Amateur | 4 | 1 hour | Toiletries |
| Joel Jolly | Stepmother | Professional | 9 | 45 mins | Ornament |
| Joanne Joseph | Ensemble | Semi-Pro | 7 | 55 mins | Chocolate |
| Kris Kringle | Footman | Semi-Pro | 10 | 40 mins | Funny |

| | | | | | |
|---------------------|-----------------|--------------|---|--------------------|------------|
| Katie Kings | Stepmother | Amateur | 9 | 35 mins | Book |
| Laura Lords-Leaping | Ensemble | Professional | 6 | 55 mins | Chocolate |
| Lars Lapland | Footman | Semi-Pro | 8 | 45 mins | Funny |
| Minnie Midwinter | Ensemble | Amateur | 7 | 55 mins | Ornament |
| Maurice Mince-Pie | Baron Hardup | Amateur | 5 | $\frac{1}{2}$ hour | Toiletries |
| Noel | Ugly Sister | Professional | 9 | 65 mins | Book |
| Nikki Nicholas | Ensemble | Semi-Pro | 4 | 55 mins | Chocolate |
| Olaf Orient-Are | Footman | Amateur | 8 | 45 mins | Funny |
| Orla Oh-Little-Town | Dancer | Professional | 7 | 1 hour | Book |
| Preetie Pudding | Fairy Godmother | Professional | 5 | 50 mins | Chocolate |
| Pav Panto | Ensemble | Amateur | 8 | 55 mins | Toiletries |



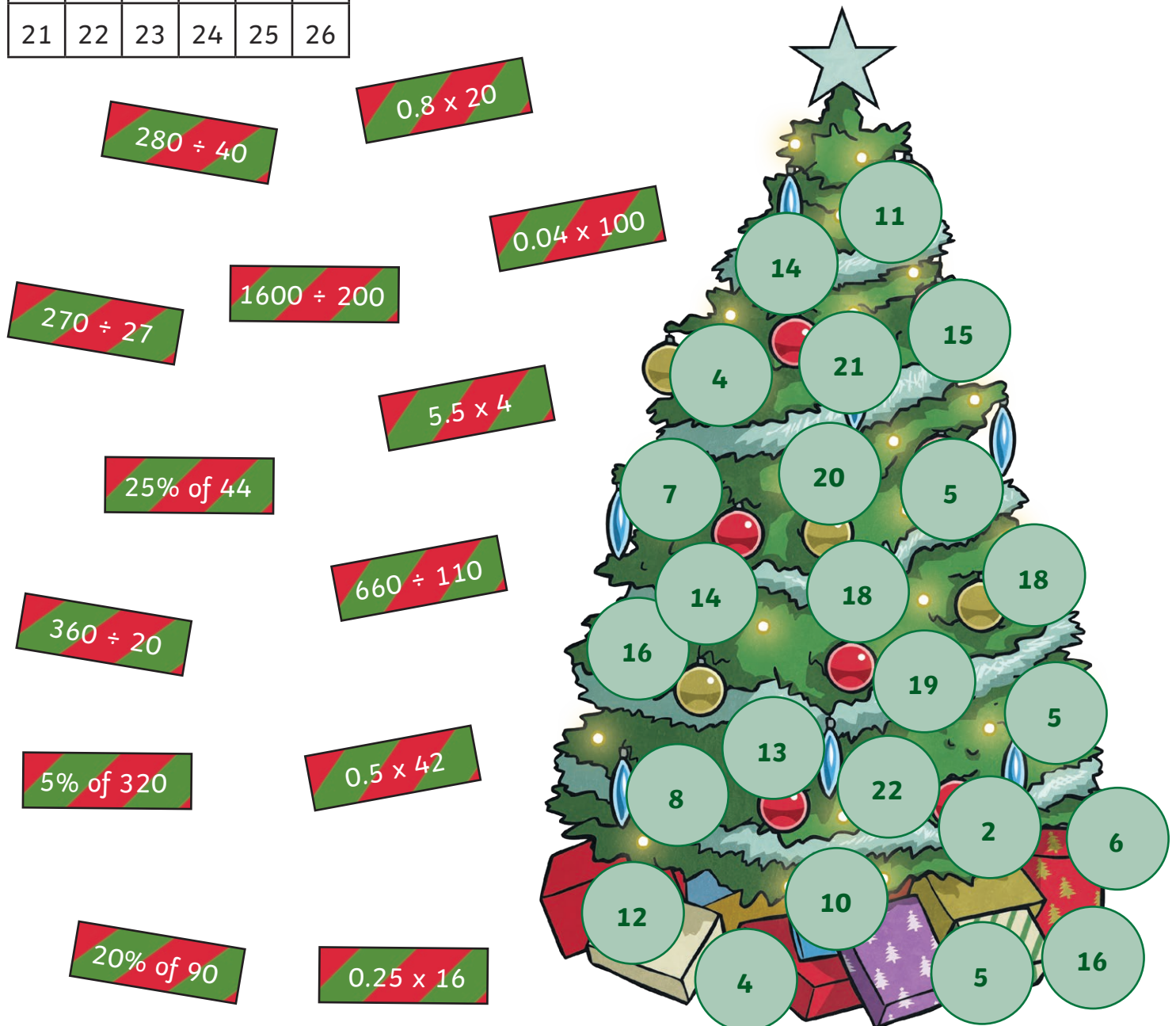
Clue 1

You spent some time looking at the timings of the robbery and you worked out that the gifts could have only been taken during certain parts of the show. This has enabled you to rule out some of the cast.

Solve the clue below by crossing out the baubles that are the answers to the calculations.

The remaining numbers (read left to right and top to bottom) will spell out the clue, using the code:

| | | | | | | | | | | | | | | | | | | | |
|----|----|----|----|----|----|---|---|---|----|----|----|----|----|----|----|----|----|----|----|
| a | b | c | d | e | f | g | h | i | j | k | l | m | n | o | p | q | r | s | t |
| 1 | 2 | 3 | 4 | 5 | 6 | 7 | 8 | 9 | 10 | 11 | 12 | 13 | 14 | 15 | 16 | 17 | 18 | 19 | 20 |
| u | v | w | x | y | z | | | | | | | | | | | | | | |
| 21 | 22 | 23 | 24 | 25 | 26 | | | | | | | | | | | | | | |



Clue 2

You have worked out that taking and hiding the presents would take a certain amount of time when other actors weren't around. Therefore, the deed must have been done by an actor who had time to do all this.

To solve this clue, work out the times for each of the events in a typical Saturday daytime at the theatre during panto season and then work out the mean average of all the timings. The thief was on stage for less than the average time.

| Event | Start time | Finish time | Duration |
|--|------------|-------------|----------|
| Rehearsals | 10:07 | 11:12 | |
| Make-up, costume and lunch. | 12:12 | 13:57 | |
| 1st half of matinee show | 13:57 | 14:44 | |
| Interval ice cream sales | 14:44 | 15:08 | |
| 2nd half of matinee show | 15:08 | 15:51 | |
| Audience leaves and souvenir shop opens | 15:51 | 16:19 | |
| Clearing and cleaning of auditorium between shows | 16:19 | 17:50 | |
| Briefing of evening stewarding and security staff | 17:50 | 18:06 | |
| Doors open for evening show and pre-show entertainment | 18:06 | 18:37 | |
| Mean Average | | | |



Clue 3

The SOCOs have found a part of a membership card for an acting society dropped under the Christmas tree. They are assuming that this belongs to the Secret Santa stealer. Part of the card gives you some more information about the actor.

To find out the clue, solve the Roman numeral calculations below. Find the answer in normal numbers and translate them into letters to spell out the clue.

| | | | | | | | | | | | | | | | | | | | |
|----|----|----|----|----|----|----|----|----|----|----|----|----|----|----|----|----|---|---|---|
| a | b | c | d | e | f | g | h | i | j | k | l | m | n | o | p | q | r | s | t |
| 26 | 25 | 24 | 23 | 22 | 21 | 20 | 19 | 18 | 17 | 16 | 15 | 14 | 13 | 12 | 11 | 10 | 9 | 8 | 7 |
| u | v | w | x | y | z | | | | | | | | | | | | | | |
| 6 | 5 | 4 | 3 | 2 | 1 | | | | | | | | | | | | | | |

Answer

Letter

$$\text{MCMLXXXIV} - \text{MCMLXXVI} =$$

$$\text{MMDCXL} \div \text{CXX} =$$

$$\text{MMDCCC} \div \text{CC} =$$

$$\text{MXVII} - \text{CMXCIX} =$$

$$\text{MMD} - \text{MMCDLXXXIX} =$$

$$\text{CDV} \div \text{XLV} =$$

$$\text{MDCCCLXXIX} - \text{MDCCCLXVII} =$$



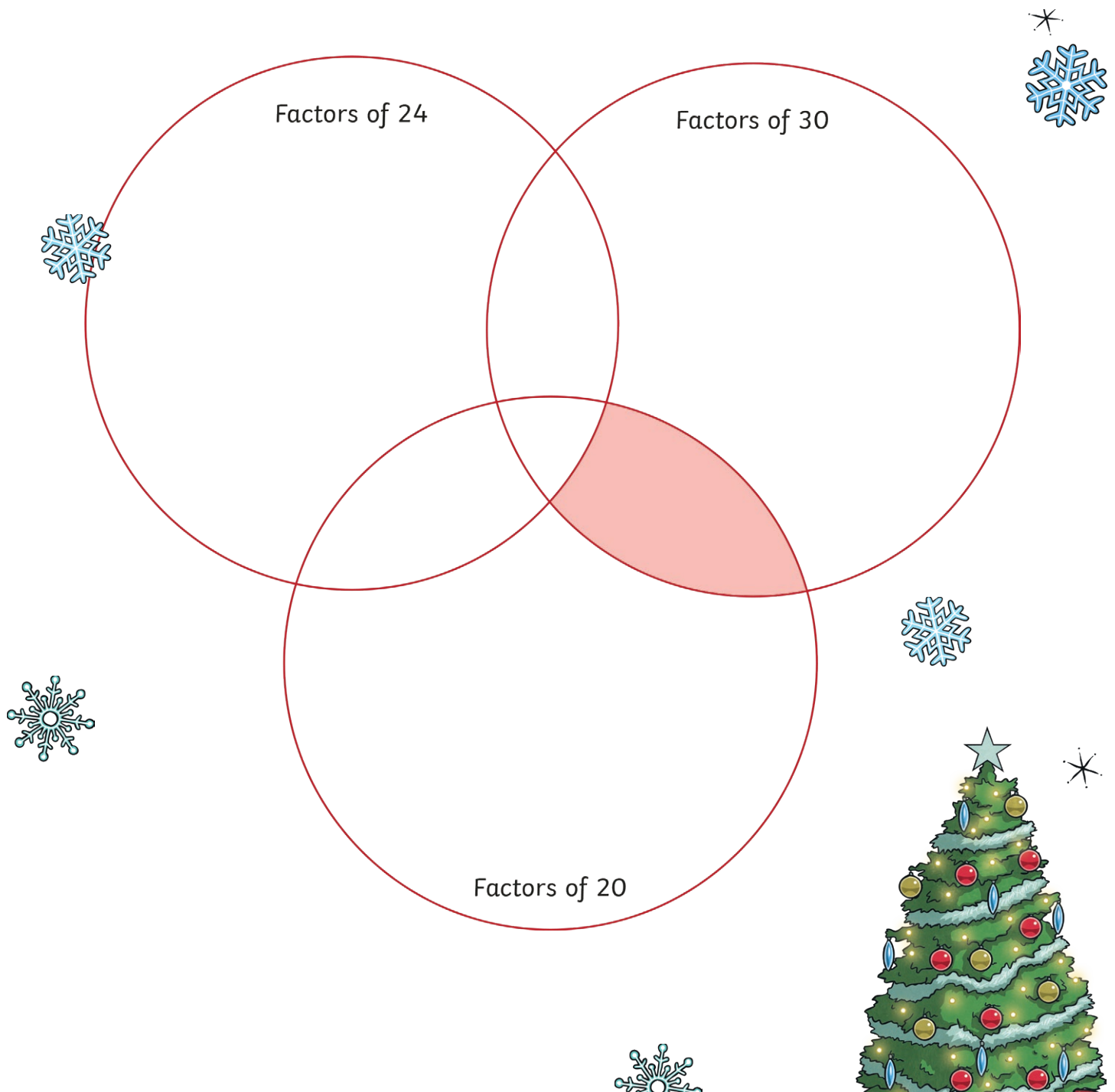
Clue 4



The SOCOs have found some footprints in some fallen glitter and fake snow under the tree that fits the patterns of someone collecting all the presents. Although the print is not clear enough to identify a particular shoe, it is enough to find out what shoe size it could be.

To solve this clue, fill in this Venn diagram with the numbers from 1-30.

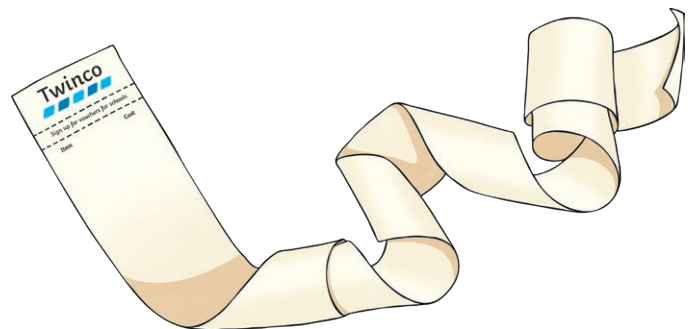
The possible shoe sizes belonging to the pilferer will be revealed in the pink section.



Clue 5

After following the trail of dodgy footprints, glitter and a faint aroma of stage makeup and deep heat, you have found the stash of Christmas presents hidden in the false bottom of the pumpkin carriage. The director, cast and crew are amazed and delighted to get their presents and festive spirit back, but who purloined the gifts?

The SOCOs inspected the carriage and presents before giving them to their rightful owners and found a jacket with a receipt for a present – the thief's Secret Santa purchase. To find out what it revealed, measure to the nearest centimetre the lengths of wig hair on the left, found in the carriage. The number of centimetres will give you a letter of the alphabet using the code, 1 = a, 2 = b, 3 = c etc, to spell out the answer.



The Confession

When the culprit was finally caught, the finger prints from the acting card were matched with prints inside the carriage so there was no doubt about the guilty party.

But, when the purloiner was asked if they had stolen the presents, they said this:

| x | 12 | 9 | 7 | 3 | 20 | 6 | 8 | 4 | 30 | 5 |
|-----|----|---|---|---|----|---|---|---|----|---|
| 10 | O | M | © | R | Q | V | N | A | L |) |
| 5 | V | F | : | C | # | R | A | (| @ | = |
| 4 | B | E | G | - | N | H | D | W | O | + |
| 7 | " | ! | Z | I | \ | S | . | G | \$ | : |
| 9 | U | [| ! | ☹ | T | ☺ | Y | E | < | F |
| 100 | K | / | £ | L | & | J | % | ? | P | ' |
| 3 | E | ☹ | I | ~ | V | , | H | - | M | C |
| 8 |] | Y | . | H | * | B | X | D | ? | A |
| 12 | ' | U | " | E | ? | Y | " | B | ; | V |
| 6 | Y | ☺ | S | , | O | E | B | H | T | R |

| | | | | | | | | | | |
|-----|----|----|-----|----|----|----|----|----|-----|-----|
| 120 | 24 | 80 | 120 | 21 | 32 | 21 | 32 | 80 | 144 | 180 |
| | | | | | | | | | | |

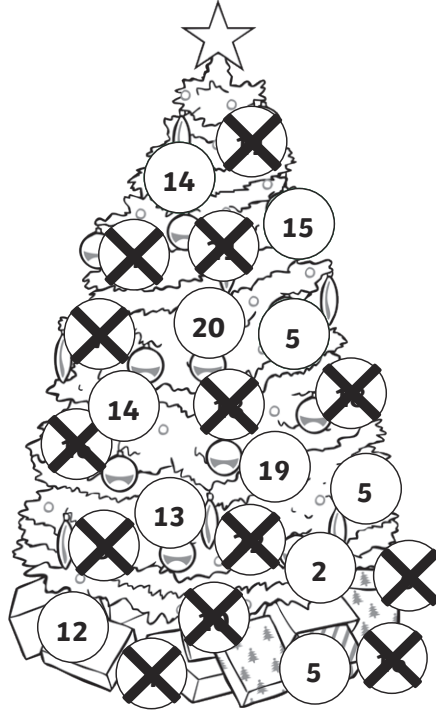
| | | | | | | | | | |
|-----|----|----|----|----|----|----|----|----|----|
| 120 | 24 | 72 | 36 | 42 | 21 | 32 | 21 | 32 | 63 |
| | | | | | | | | | |

Answers

Clue 1:

Reveals: not ensemble

Please note: the numbers 4 and 16 and 18 appear twice on the tree; two questions generate each as an answer, so both should be crossed out when the pupil has worked through all the calculations.



Clue 2:

Reveals: The actor cannot have been on stage for longer than 50 minutes (50 minutes is OK, but not more).

| Event | Start time | Finish time | Duration |
|--|------------|-------------|----------|
| Rehearsals | 10:07 | 11:12 | 65 mins |
| Make-up, costume and lunch. | 12:12 | 13:57 | 105 mins |
| 1st half of matinee show | 13:57 | 14:44 | 47 mins |
| Interval ice cream sales | 14:44 | 15:08 | 24 mins |
| 2nd half of matinee show | 15:08 | 15:51 | 43 mins |
| Audience leaves and souvenir shop opens | 15:51 | 16:19 | 28 mins |
| Clearing and cleaning of auditorium between shows | 16:19 | 17:50 | 91 mins |
| Briefing of evening stewarding and security staff | 17:50 | 18:06 | 16 mins |
| Doors open for evening show and pre-show entertainment | 18:06 | 18:37 | 31 mins |
| Mean Average | | | 50 mins |

Answers

Clue 3:

Reveals: semi-pro

| | | | | Answer | Letter |
|------------|---|------------|---|--------|--------|
| MCMLXXXIV | - | MCMLXXVI | = | 8 | S |
| MMDCXL | ÷ | CXX | = | 22 | E |
| MMDCCC | ÷ | CC | = | 14 | M |
| MXVII | - | CMXCIX | = | 18 | I |
| MMD | - | MMCDLXXXIX | = | 11 | P |
| CDV | ÷ | XLV | = | 9 | R |
| MDCCCLXXIX | - | MDCCCLXVII | = | 12 | O |

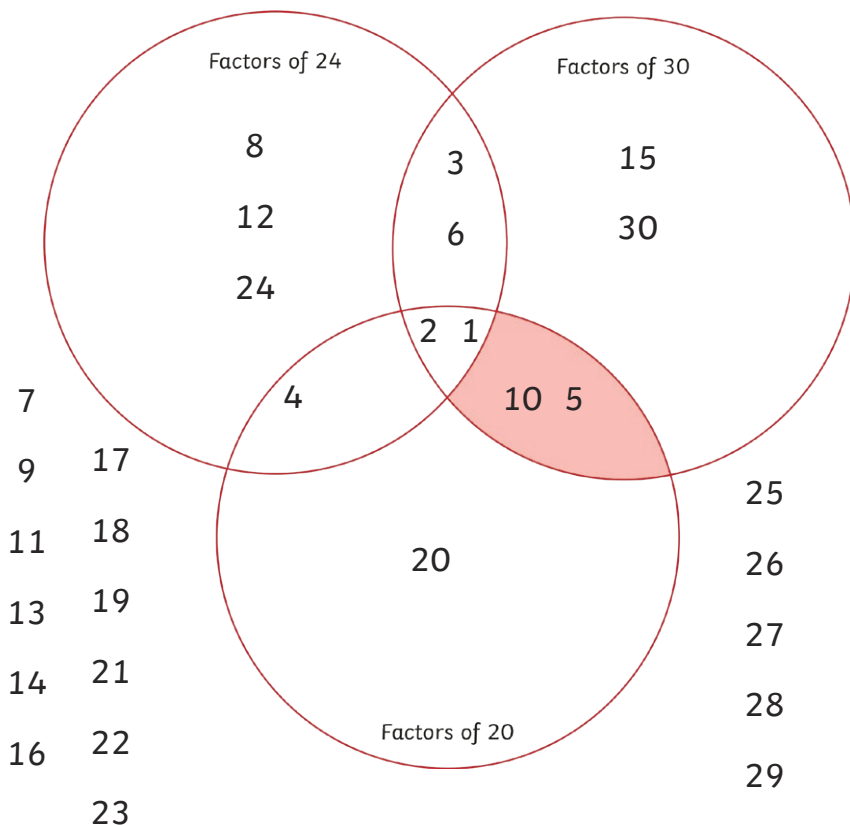
Clue 4:

Reveals: 10 or 5

Clue 5:

Spells: from a joke shop

(therefore they bought a funny present).



The Culprit:

Kris Kringle

The Confession:

Oh no I didn't

Oh yes I did!